



SRI LANKA

**LISTING OF NON - AGRICULTURAL  
ECONOMIC ACTIVITIES  
1995**

**Rural Sector**

**District Report**

**Matale District**

*department of census and statistics  
ministry of finance and planning*





**LISTING OF NON - AGRICULTURAL  
ECONOMIC ACTIVITIES  
1995**

**Rural Sector**

**District Report**

**Matale District**

புத்தகம்

புத்தகம்

புத்தகம்

புத்தகம்

ISBN 955 - 577 - 251 - 7

புத்தகம்

புத்தகம்

Published in 2000

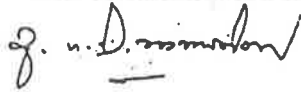
புத்தகம்

## PREFACE

The Department of Census and Statistics carried out a comprehensive listing of Non Agricultural Economic Activities in 1995 and covered rural areas of all provinces except Northern and Eastern provinces.

This report which includes basic Industrial statistics in the rural sector of the Matale District is prepared to serve the immediate needs of the Grama Niladhari Division and Divisional Secretariat Divisional level data users. It is planned to publish the similar reports for all relevant Districts and the all island report.

I hope that the information presented in this document, though it is provisional will be of immense use to planners and policy makers.



A.G.W. Nanayakkara,  
Director General,  
Dept. of Census & Statistics,  
No. 15/12,  
Maitland Crescent,  
Colombo 07.  
27th. July 1999.

## **ACKNOWLEDGEMENT**

The listing operation of Non- Agricultural Economic Activities was undertaken by the Department of Census & Statistics which was funded by Institute of Construction Training and Development (ICTAD). This operation was planned mainly to establish a frame of building material industries and to ascertain the out put of the construction sector.

The planning, execution and successful completion of the entire listing operation were performed by the staff of Industry and Construction Division of the Department.

Enumerators who did the listing operation at the Grama Niladhari Division level, Statistical Investigators who were responsible for data collection and the District Statisticians / Statistical Officers who coordinated the activity are acknowledged.

The staff of the Data Processing Division and Statistical Investigators attached to some District offices who were engaged in computer data entry activities are much appreciated.

Special thanks are due to District Secretary and Divisional Secretaries of the District whose fullest co-operation was very vital to the successful completion of this operation.

Preparation of this publication was done by Mr. D.S.S.Gunawardana Statistical Officer using Apple Mackintosh and the statistical tables were obtained by Mr. R.D.N. Premawansa Statistical Investigator using SPSS PC+.

Acknowledgements are also due to Mr. K. D. Siripala, Deputy Director and his staff for printing this report within a short period.

The co-operation given by the respondents is also much appreciated.

## CONTENTS

	PAGE
1. PREFACE	
2. ACKNOWLEDGEMENT	
3. CONTENTS	
A. INTRODUCTION	1
B. COVERAGE	1
C. LISTING OPERATION	2
D. PREPARATION OF TABLES	2
4. TABLES	5 - 23
5. CHARTS	24 - 29
6. ANNEX	30

## Table Nos:

1. No. of Establishments & persons engaged by Divisional Secretary Division 1995.	5
2. No. of Establishments & persons engaged by Divisional Secretary Division & by Sector 1995.	5
3. No. of Establishments & persons engaged by Divisional Secretary Division & by Size Class 1995.	6
4. No. of Establishments & persons engaged by Major Industry Division ( ISIC 1 digit level ) 1995.	6
5. No. of Establishments & persons engaged by Industry Division. ( ISIC 2 digit level ) 1995.	7
6. No. of Establishments & persons engaged by Major Industry Group ( ISIC 3 digit level ) 1995.	8
7. No. of Establishments & persons engaged by Industry Group ( ISIC 4 digit level ) 1995.	9

<b>Table Nos:</b>		<b>Page</b>
8.	<b>No. of Establishments &amp; persons engaged by Divisional Secretary Division &amp; Major Industry Division ( ISIC 1 digit level ) 1995.</b>	<b>10</b>
9.	<b>No. of Establishments &amp; persons engaged by Divisional Secretary Division &amp; Industry Division ( ISIC 2 digit level ) 1995.</b>	<b>11</b>
10.	<b>Distribution of Establishments &amp; persons engaged by Divisional Secretary Division &amp; persons engaged size class 1995.</b>	<b>15</b>

**Chart Nos:**

1.	<b>No. of Establishments by Divisional Secretary Division 1995.</b>	<b>24</b>
2.	<b>Persons engaged by Divisional Secretary Division 1995.</b>	<b>25</b>
3.	<b>No. of Establishments by persons engaged size class 1995.</b>	<b>26</b>
4.	<b>Persons engaged by size class 1995.</b>	<b>27</b>
5.	<b>No. of Establishments by Industry Division 1995.</b>	<b>28</b>
6.	<b>No. of Establishments &amp; persons engaged by Type of Sector 1995.</b>	<b>29</b>



## **Listing of Non Agricultural Economic Activities - 1995**

### **A. Introduction**

Listing of Non Agricultural Economic Activities was conducted in stage is in Rural Sector covering all districts except the districts in Northern & Eastern Provinces. The main objective of this exercise was to identify the building material producing units and to compile the value of construction output of the housing sector as required by ICTAD. However, in order to make the exercise complete all non agricultural activities were enumerated.

A Grama Niladhari ( GN ) Division or a part of GN Division was considered as an enumeration area and enumerators were appointed by the Divisional Secretary of the area. The enumerator prepared a list of non agricultural economic activities by visiting each and every building in the enumeration area under the supervision of District Statistical Staff and the Head Office Staff.

### **B. Coverage**

#### **i. Economic Activities**

The following Economic Activities were covered by the listing of non-agricultural economic activities.

1. Mining and Quarrying
2. Manufacturing
3. Electricity, Gas production & Water supply
4. Trade, Hotels and restaurants
5. Transport, Communication & Storage
6. Finance, Insurance, Real estate and business services
7. Public Administration, Education & Health activities
8. Community and Social Service & Private service activities
9. Construction

#### **ii Area**

This listing operation covered only the rural sector in Sri Lanka and did not cover:

1. Northern and Eastern Provinces
2. All Municipal Councils and Urban Councils
3. Areas covered by the Board of Investment

### **C. Listing Operation**

The recruited enumerators were given a two days training by panel of trainers selected and trained for that purpose in advance. An enumerator is assigned to each enumeration area which is usually a GN Division . When the GN Division is spread over a larger area or has a large number of housing units / buildings, the GN Division is divided into two enumeration areas.

The enumerators were asked to complete one line in the listing form (L) for each housing unit / building with the following information.

1. Name of the owner proprietor of the enterprise/chief occupant
2. Postal address
3. Nature of the unit
4. Type of Economic activity
5. Type of construction activity
6. Numbe of residents

If the housing unit/building was having the activities on

1. Mining and quarrying
2. Manufacturing
3. Electricity, Gas and Water

The following further information is inserted to the L1 form.

1. Economic Organization of the Establishment
2. Type of ownership of the establishment
3. Type of Industry
4. Major Products produced by the establishment
5. Persons engaged in the industry

Further if the housing units/building had done some construction activities during the reference period that too were included in an another form called L 3 with the following additional information.

1. Type of the Construction Activity done during the period from January to June in 1995
2. Expenditure/Estimated expenditure incurred during the period
3. Source of funds

#### D. Preparation of Tables

The information collected by the enumerators through L1 form was checked for completeness and data coded by the range Statistical Investigator under the supervision of the District Statistician/Statistical Officer. When two major products were given for an establishment, but products were coded using the information available in column 6 & 7. However the code for the 1st product is considered as the code relevant for the whole establishment in the tabulation procedure.

In most of the districts, data entry was done at the District Office itself using the personal computers available there. However L1 forms relevant to few districts were fed to the computer by the Data Processing Division of the Department.

The tabulation was done by the Industry and Construction Division using the SPSS PC+ package. The tables consist number of establishments and the persons engaged by Divisional Secretary Division and ISIC two digit level (Revision 3) in one set and ISIC 4 digit level (Revision 03) at district level in the other set. In cases when it is felt that the individual identification is disclosed, the information is either combined with another category or suppressed.

Preparation of Tables

The information collected by the enumerators in the night 1951 was... The information collected by the enumerators in the night 1951 was... The information collected by the enumerators in the night 1951 was...

In most of the districts, data entry was done in the... In most of the districts, data entry was done in the... In most of the districts, data entry was done in the...

The tabulation was done by the Industry and Commerce... The tabulation was done by the Industry and Commerce... The tabulation was done by the Industry and Commerce...



TABLE 1: NO. OF ESTABLISHMENT\* & PERSONS ENGAGED BY DIVISIONAL  
SECRETARY DIVISION  
NATALE DISTRICT - RURAL SECTOR - 1995

D. S. DIVISION	NO. OF ESTABLISHMENTS	PERSONS ENGAGED
AMBANGANGA KORALAYA.....	118	342
DAMBULLA.....	367	1,417
GALEWELA.....	207	437
LAGGALA PALLBGAMA.....	272	1,286
NATALE.....	281	1,764
NAULA.....	362	2,179
PALLEPOLA.....	483	2,148
RATTOTA.....	472	1,447
UKUWELA.....	752	3,338
WILGANUWA.....	344	564
YATAWATTA.....	552	1,207
TOTAL.....	4,210	16,129

\* - MINING & QUARRYING AND MANUFACTURING

TABLE 2: NO. OF ESTABLISHMENT\* & PERSONS ENGAGED BY DIVISIONAL SECRETARY DIVISION & BY SECTOR  
NATALE DISTRICT - RURAL SECTOR - 1995

D. S. DIVISION	TYPE OF SECTOR			
	PRIVATE **		OTHER	
	NO. OF ESTABLISHMENTS	PERSONS ENGAGED	NO. OF ESTABLISHMENTS	PERSONS ENGAGED
AMBANGANGA KORALAYA.....	106	265	12	77
DAMBULLA.....	367	1,417	.	.
GALEWELA.....	207	437	.	.
LAGGALA PALLBGAMA.....	261	846	11	440
NATALE.....	268	1,608	13	156
NAULA.....	349	1,975	13	204
PALLEPOLA.....	479	1,606	4	542
RATTOTA.....	458	1,134	14	313
UKUWELA.....	746	3,292	6	46
WILGANUWA.....	339	559	5	5
YATAWATTA.....	548	1,192	4	15
TOTAL.....	4,128	14,331	82	1,798

\* - MINING & QUARRYING AND MANUFACTURING

\*\* - EXCLUDING B.O.I.

TABLE 3: NO. OF ESTABLISHMENT\* & PERSONS ENGAGED BY DIVISIONAL SECRETARY DIVISION & BY SIZE CLASS  
MATALE DISTRICT - RURAL SECTOR - 1995

D.S.DIVISION	PERSONS ENGAGED SIZE CLASS					
	1 - 4		5 - 14		15 & ABOVE	
	NO. OF ESTABLISHMENTS	PERSONS ENGAGED	NO. OF ESTABLISHMENTS	PERSONS ENGAGED	NO. OF ESTABLISHMENTS	PERSONS ENGAGED
AMBANGANGA KORALAYA.....	104	171	11	100	3	71
DAMBULLA.....	308	584	40	319	19	514
GALEWELA.....	192	318	13	79	-	-
LAGGALA PALLEGAMA.....	207	390	58	402	9	534
MATALE.....	220	430	44	305	17	1,029
NAULA.....	318	544	22	163	22	1,472
PALLEPOLA.....	400	721	53	389	30	1,038
RATTOTA.....	423	566	35	243	14	538
UKUWELA.....	684	997	49	349	19	1,992
WILGAMUWA.....	339	483	3	26	-	-
YATAWATTA.....	518	838	27	202	9	222
TOTAL.....	3,713	6,142	355	2,577	142	7,410

\* - MINING & QUARRYING AND MANUFACTURING

TABLE 4: NO. OF ESTABLISHMENT\* & PERSONS ENGAGED BY MAJOR INDUSTRY DIVISION\*\* (ISIC 1 DIGIT LEVEL)  
MATALE DISTRICT - RURAL SECTOR - 1995

MAJOR INDUSTRY DIVISION	NO. OF ESTABLISHMENTS	PERSONS ENGAGED
C MINING & QUARRYING.....	401	2,862
D MANUFACTURING.....	3,809	13,267
TOTAL.....	4,210	16,129

\* - MINING & QUARRYING AND MANUFACTURING

\*\* - ISIC REVISION 03

TABLE 5:NO.OF ESTABLISHMENT\* & PERSONS ENGAGED BY INDUSTRY DIVISION\*\* (ISIC 2 DIGIT LEVEL)  
MATALE DISTRICT - RURAL SECTOR - 1995

INDUSTRY DIVISION	NO.OF ESTABLISHMENTS	PERSONS ENGAGED
14 OTHER MINING & QUARRYING.....	401	2,862
15 FOOD PRODUCTS & BEVERAGES.....	1,224	3,430
16 TOBACCO PRODUCTS.....	573	1,844
17 TEXTILES.....	207	752
18 WEARING APPEREL DRESSING & DYING OF FUR.....	268	1,883
19 TRAINING & DRESSING OF LEATHER, LEATHER GOODS & FOOTWEAR...	10	32
20 WOOD & WOOD PRODUCTS, EXCEPT FURNITURE.....	597	1,240
21 PAPER & PAPER PRODUCTS.....	11	24
22 PUBLISHING,PRINTING & REPRODUCTION OF RECORDED MEDIA.....	10	34
24 CHEMICALS & CHEMICAL PRODUCTS.....	27	72
25 RUBBER & PLASTICS PRODUCTS.....	57	434
26 OTHER NON-METALIC MINERAL PRODUCTS.....	321	2,586
27 BASIC METAL INDUSTRIES.....	7	28
28 FABRICATED METAL PRODUCTS,EXCEPT MACHINERY & EQUIPMENT.....	228	392
36 MANU.OF FURNITURE, MANUFACTURING M.E.C.....	242	434
99 OTHER PRODUCT.....	27	82
TOTAL.....	4,210	16,129

\* - MINING & QUARRYING AND MANUFACTURING

\*\* - ISIC REVISION 03

TABLE 6:NO.OF ESTABLISHMENT\* & PERSONS ENGAGED BY MAJOR INDUSTRY GROUP\*\* (ISIC 3 DIGIT LEVEL)  
MATALE DISTRICT-- RURAL SECTOR - 1995

MAJOR INDUSTRY GROUP	NO.OF ESTABLISHMENTS	PERSONS ENGAGED
141 QUARRYING OF STONE, SAND & CLAY.....	261	1,827
142 MINING & QUARRYING N.E.C.....	140	1,035
151 MEAT, FISH, FRUIT, VEGETABLE, OILS & FATS PRODUCTS.....	42	87
152 MANU. OF DAIRY PRODUCTS.....	18	38
153 GRAIN MILL, STARCHES & STARCH PRODUCTS, ANIMAL FEEDS.....	736	1,622
154 OTHER FOOD PRODUCTS.....	416	1,671
155 BEVERAGES.....	12	12
160 TOBACCO PRODUCTS.....	573	1,844
171 SPINNING, WEAVING & FINISHING OF TEXTILES.....	59	472
172 OTHER TEXTILES.....	144	274
173 KNITTED & CROCHETED FABRICS & ARTICLES.....	4	6
181 WEARING APPAREL, EXCEPT FUR APPAREL.....	268	1,883
191 TANNING & LEATHER.....	5	12
192 MANU. OF FOOTWEAR.....	5	20
201 SAWMILLING & PLANING OF WOOD.....	40	179
202 MANU. OF PRODUCTS OF WOOD, CORK, STRAW & PLAITING MATERIALS..	557	1,061
210 PAPER & PAPER PRODUCTS.....	11	24
222 PRINTING & SERVICE ACTIVITIES RELATED TO PRINTING.....	10	34
242 OTHER CHEMICALS PRODUCTS.....	27	72
251 RUBBER PRODUCTS.....	53	353
252 PLASTIC PRODUCTS.....	4	81
269 NON-METALLIC MINERAL PRODUCTS N.E.C.....	321	2,586
271 BASIC IRON & STEEL.....	3	8
273 CASTING OF METALS.....	4	20
281 STRUCTURAL METAL PRODUCTS.....	40	83
289 OTHER FABRICATED METAL PRODUCTS.....	188	309
361 MANU. OF FURNITURE.....	108	175
369 MANUFACTURING N.E.C.....	134	259
999 OTHER PRODUCT.....	27	82
TOTAL.....	4,210	16,129

\* - MINING & QUARRYING AND MANUFACTURING

\*\* - ISIC REVISION 03



TABLE 7: NO. OF ESTABLISHMENT\* & PERSONS ENGAGED BY INDUSTRY GROUP\*\* (ISIC 4 DIGIT LEVEL)  
 NATALE DISTRICT - RURAL SECTOR - 1995

INDUSTRY GROUP	NO. OF ESTABLISHMENTS	PERSONS ENGAGED
1410 QUARRYING OF STONE, SAND & CLAY.....	261	1,827
1429 OTHER MINING & QUARRYING N.E.C.....	140	1,035
1513 PROCESSING & PRESERVING OF FRUIT & VEGETABLES.....	42	87
1520 DAIRY PRODUCTS.....	18	38
1531 GRAIN MILL PRODUCTS.....	736	1,622
1541 BAKERY PRODUCTS.....	174	459
1542 MANUFACTURE OF SUGER.....	66	132
1543 COCOA, CHOCOLATE & SUGER CONFECTIONERY.....	33	522
1544 MACARONI, NOODLES, COUSCOUS & SIMILAR PRODUCTS.....	60	87
1549 OTHER FOOD PRODUCTS N.E.C.....	83	471
1552 WINES.....	12	12
1600 TOBACCO PRODUCTS.....	573	1,844
1711 PREPARATION & SPINNING OF TEXTILE FIBRES.....	51	294
1712 FINISHING OF TEXTILES.....	8	178
1721 MADE-UP TEXTILE ARTICLES, EXCEPT APPAREL.....	40	156
1722 CARPETS & RUGS.....	98	105
1723 CORDAGE, ROPE, TWINE & NETTING.....	6	13
1730 KNITTED & CROCHETED FABRICS & ARTICLES.....	4	6
1810 WEARING APPAREL, EXCEPT FUR APPAREL.....	268	1,883
1912 MANU. OF LEATHER GOODS.....	5	12
1920 FOOTWEAR.....	5	20
2010 SAWMILLING & PLANING OF WOOD.....	40	179
2022 BUILDERS CARPENTRY & JOINERY.....	94	155
2023 WOODEN CONTAINERS.....	12	40
2029 OTHER PRODUCTS OF WOOD.....	451	866
2102 CORRUGATED PAPER & PAPERBOARD & CONTAINERS.....	4	9
2109 OTHER ARTICLES OF PAPER & PAPERBOARD.....	7	15
2221 PRINTING.....	10	24
2423 PHARMACEUTICALS, MEDICINAL CHEMICALS & BOTANICAL.....	10	19
2429 OTHER CHEMICAL PRODUCTS N.E.C.....	17	53
2519 OTHER RUBBER PRODUCTS.....	53	353
2520 PLASTIC PRODUCTS.....	4	81
2691 NON-STRUCTURAL NON- REFRACTORY CERAMIC WARE.....	19	1,551
2692 REFRACTORY CERAMIC PRODUCTS.....	140	435
2693 STRUCTURAL MONO-REFRACTORY CLAY & CERAMIC PRODUCTS.....	99	308
2694 CEMENT, LIME & PLASTER.....	34	180
2695 ARTICLES OF CONCRETE, CEMENT & PLASTER.....	24	95
2699 OTHER NON-METALIC MINERAL PRODUCTS N.E.C.....	5	17
2710 BASIC IRON & STEEL.....	3	8
2731 CASTING OF IRON & STEEL.....	4	20
2811 STRUCTURAL METAL PRODUCTS.....	40	83
2893 CUTLERY, HAND TOOLS & GENERAL HARDWARE.....	90	140
2899 OTHER FABRICATED METAL PRODUCTS.....	98	169
3610 FURNITURE.....	108	175
3691 JEWELLERY & RELATED ARTICLES.....	49	92
3699 OTHER MANUFACTURING N.E.C.....	85	167
9999 OTHER PRODUCT.....	27	82
TOTAL.....	4,210	16,129

\* - MINING & QUARRYING AND MANUFACTURING

\*\* - ISIC REVISION 03

**TABLE 8: NO. OF ESTABLISHMENT\* & PERSONS ENGAGED BY DIVISIONAL SECRETARY DIVISION & MAJOR INDUSTRY DIVISION\*\* (ISIC 1 DIGIT LEVEL)  
MATALE DISTRICT - RURAL SECTOR - 1995**

D. S. DIVISION & MAJOR INDUSTRY DIVISION	NO. OF ESTABLISHMENTS	PERSONS ENGAGED
<b>AMBANGANGA KORALAYA</b>		
C MINING & QUARRYING.....	5	86
D MANUFACTURING.....	113	256
<b>DAMBULLA</b>		
C MINING & QUARRYING.....	17	92
D MANUFACTURING.....	350	1,335
<b>GALEWELA</b>		
C MINING & QUARRYING.....	11	33
D MANUFACTURING.....	196	404
<b>LAGGALA PALLEGAMA</b>		
C MINING & QUARRYING.....	117	594
D MANUFACTURING.....	155	692
<b>MATALE</b>		
C MINING & QUARRYING.....	60	378
D MANUFACTURING.....	221	1,386
<b>NAULA</b>		
C MINING & QUARRYING.....	69	825
D MANUFACTURING.....	293	1,354
<b>PALLEPOLA</b>		
C MINING & QUARRYING.....	29	200
D MANUFACTURING.....	454	1,948
<b>RATTOTA</b>		
C MINING & QUARRYING.....	35	422
D MANUFACTURING.....	437	1,025
<b>UKUWELA</b>		
C MINING & QUARRYING.....	18	79
D MANUFACTURING.....	734	3,259
<b>WILGANUWA</b>		
C MINING & QUARRYING.....	25	100
D MANUFACTURING.....	319	464
<b>YATAWATTA</b>		
C MINING & QUARRYING.....	15	63
D MANUFACTURING.....	537	1,144
<b>TOTAL.....</b>	<b>4,210</b>	<b>16,129</b>

\* - MINING & QUARRYING AND MANUFACTURING

\*\* - ISIC REVISION 03

TABLE 9: NO. OF ESTABLISHMENT\* & PERSONS ENGAGED BY DIVISIONAL SECRETARY DIVISION & INDUSTRY DIVISION\*\* (ISIC 2 DIGIT LEVEL)  
MATALE DISTRICT - RURAL SECTOR - 1995

D.S. DIVISION & INDUSTRY DIVISION	NO. OF ESTABLISHMENTS	PERSONS ENGAGED
<b>AMBANGANGA KORALAYA</b>		
14 OTHER MINING & QUARRYING.....	5	86
15 FOOD PRODUCTS & BEVERAGES.....	32	62
16 TOBACCO PRODUCTS.....	3	6
17 TEXTILES.....	17	36
18 WEARING APPEREL DRESSING & DYING OF FUR.....	6	8
20 WOOD & WOOD PRODUCTS, EXCEPT FURNITURE.....	9	13
25 RUBBER & PLASTICS PRODUCTS.....	16	64
26 OTHER NON-METALIC MINERAL PRODUCTS.....	10	47
28 FABRICATED METAL PRODUCTS, EXCEPT MACHINERY & EQUIPMENT...	20	20
<b>DAMBULLA</b>		
14 OTHER MINING & QUARRYING.....	17	82
15 FOOD PRODUCTS & BEVERAGES.....	175	771
16 TOBACCO PRODUCTS.....	9	59
17 TEXTILES.....	3	26
18 WEARING APPEREL DRESSING & DYING OF FUR.....	19	24
20 WOOD & WOOD PRODUCTS, EXCEPT FURNITURE.....	47	93
25 RUBBER & PLASTICS PRODUCTS.....	7	94
26 OTHER NON-METALIC MINERAL PRODUCTS.....	53	154
28 FABRICATED METAL PRODUCTS, EXCEPT MACHINERY & EQUIPMENT...	22	41
99 OTHER PRODUCT.....	15	66
<b>GALEWELA</b>		
14 OTHER MINING & QUARRYING.....	11	33
15 FOOD PRODUCTS & BEVERAGES.....	85	149
16 TOBACCO PRODUCTS.....	27	91
18 WEARING APPEREL DRESSING & DYING OF FUR.....	13	25
20 WOOD & WOOD PRODUCTS, EXCEPT FURNITURE.....	26	48
24 CHEMICALS & CHEMICAL PRODUCTS.....	3	5
26 OTHER NON-METALIC MINERAL PRODUCTS.....	17	34
28 FABRICATED METAL PRODUCTS, EXCEPT MACHINERY & EQUIPMENT...	12	23
36 MANU. OF FURNITURE, MANUFACTURING N.B.C.....	13	29
<b>LAGGALA PALLEGAMA</b>		
14 OTHER MINING & QUARRYING.....	117	594
15 FOOD PRODUCTS & BEVERAGES.....	79	182
16 TOBACCO PRODUCTS.....	17	41

(continued)

\* - MINING &amp; QUARRYING AND MANUFACTURING

\*\* - ISIC REVISION 03

TABLE 9: NO. OF ESTABLISHMENT\* & PERSONS ENGAGED BY DIVISIONAL SECRETARY DIVISION & INDUSTRY DIVISION\*\* (ISIC 2 DIGIT LEVEL)  
MATALE DISTRICT - RURAL SECTOR - 1995

D.S.DIVISION & INDUSTRY DIVISION	NO. OF ESTABLISHMENTS	PERSONS ENGAGED
13 WEARING APPERBL DRESSING & DYING OF FUR.....	10	388
20 WOOD & WOOD PRODUCTS, EXCEPT FURNITURE.....	26	35
26 OTHER NON-METALIC MINERAL PRODUCTS.....	13	33
28 FABRICATED METAL PRODUCTS, EXCEPT MACHINERY & EQUIPMENT...	10	13
<b>MATALE</b>		
14 OTHER MINING & QUARRYING.....	60	378
15 FOOD PRODUCTS & BEVERAGES.....	70	146
16 TOBACCO PRODUCTS.....	14	172
17 TEXTILES.....	13	149
18 WEARING APPERBL DRESSING & DYING OF FUR.....	23	533
20 WOOD & WOOD PRODUCTS, EXCEPT FURNITURE.....	17	56
24 CHEMICALS & CHEMICAL PRODUCTS.....	4	14
25 RUBBER & PLASTICS PRODUCTS.....	6	17
26 OTHER NON-METALIC MINERAL PRODUCTS.....	31	218
28 FABRICATED METAL PRODUCTS, EXCEPT MACHINERY & EQUIPMENT...	15	31
36 MANU. OF FURNITURE, MANUFACTURING N.E.C.....	28	50
<b>MAULA</b>		
14 OTHER MINING & QUARRYING.....	69	825
15 FOOD PRODUCTS & BEVERAGES.....	101	175
16 TOBACCO PRODUCTS.....	13	147
17 TEXTILES.....	5	110
18 WEARING APPERBL DRESSING & DYING OF FUR.....	24	609
20 WOOD & WOOD PRODUCTS, EXCEPT FURNITURE.....	9	52
26 OTHER NON-METALIC MINERAL PRODUCTS.....	54	121
28 FABRICATED METAL PRODUCTS, EXCEPT MACHINERY & EQUIPMENT...	13	26
36 MANU. OF FURNITURE, MANUFACTURING N.E.C.....	68	97
99 OTHER PRODUCT.....	6	17
<b>PALLEPOLA</b>		
14 OTHER MINING & QUARRYING.....	29	200
15 FOOD PRODUCTS & BEVERAGES.....	123	568
16 TOBACCO PRODUCTS.....	105	658
17 TEXTILES.....	7	13
18 WEARING APPERBL DRESSING & DYING OF FUR.....	30	47
20 WOOD & WOOD PRODUCTS, EXCEPT FURNITURE.....	51	139
26 OTHER NON-METALIC MINERAL PRODUCTS.....	57	194
28 FABRICATED METAL PRODUCTS, EXCEPT MACHINERY & EQUIPMENT...	23	41
36 MANU. OF FURNITURE, MANUFACTURING N.E.C.....	54	109
99 OTHER PRODUCT.....	4	179

(continued)

\* - MINING &amp; QUARRYING AND MANUFACTURING

\*\* - ISIC REVISION 03



TABLE 9: NO. OF ESTABLISHMENT\* & PERSONS ENGAGED BY DIVISIONAL SECRETARY DIVISION & INDUSTRY DIVISION\*\* (ISIC 2 DIGIT LEVEL)  
MATALE DISTRICT - RURAL SECTOR - 1995

D.S. DIVISION & INDUSTRY DIVISION	NO. OF ESTABLISHMENTS	PERSONS ENGAGED
<b>RATTOTA</b>		
14 OTHER MINING & QUARRYING.....	35	422
15 FOOD PRODUCTS & BEVERAGES.....	99	407
16 TOBACCO PRODUCTS.....	71	88
17 TEXTILES.....	13	23
18 WEARING APPEREL DRESSING & DYING OF FUR.....	30	61
20 WOOD & WOOD PRODUCTS, EXCEPT FURNITURE.....	126	216
24 CHEMICALS & CHEMICAL PRODUCTS.....	5	13
25 RUBBER & PLASTICS PRODUCTS.....	3	3
26 OTHER NON-METALIC MINERAL PRODUCTS.....	36	107
28 FABRICATED METAL PRODUCTS, EXCEPT MACHINERY & EQUIPMENT...	19	40
36 MANU. OF FURNITURE, MANUFACTURING N.B.C.....	30	58
99 OTHER PRODUCT.....	5	9
<b>UKUWELA</b>		
14 OTHER MINING & QUARRYING.....	18	79
15 FOOD PRODUCTS & BEVERAGES.....	173	497
16 TOBACCO PRODUCTS.....	209	281
17 TEXTILES.....	44	193
18 WEARING APPEREL DRBSSING & DYING OF FUR.....	60	132
19 TRAINING & DRESSING OF LEATHER, LEATHER GOODS & FOOTWEAR.	3	3
20 WOOD & WOOD PRODUCTS, EXCEPT FURNITURE.....	105	262
21 PAPER & PAPER PRODUCTS.....	3	7
22 PUBLISHING, PRINTING & REPRODUCTION OF RECORDED MEDIA.....	7	29
24 CHEMICALS & CHEMICAL PRODUCTS.....	5	15
25 RUBBER & PLASTICS PRODUCTS.....	3	33
26 OTHER NON-METALIC MINERAL PRODUCTS.....	29	1,621
27 BASIC METAL INDUSTRIES.....	3	18
28 FABRICATED METAL PRODUCTS, EXCEPT MACHINERY & EQUIPMENT...	63	105
36 MANU. OF FURNITURE, MANUFACTURING N.B.C.....	21	47
99 OTHER PRODUCT.....	6	16
<b>WILGAMUWA</b>		
14 OTHER MINING & QUARRYING.....	25	100
15 FOOD PRODUCTS & BEVERAGES.....	161	244
16 TOBACCO PRODUCTS.....	8	25
17 TEXTILES.....	14	18
18 WEARING APPEREL DRESSING & DYING OF FUR.....	34	36
20 WOOD & WOOD PRODUCTS, EXCEPT FURNITURE.....	77	98
28 FABRICATED METAL PRODUCTS, EXCEPT MACHINERY & EQUIPMENT...	16	30
99 OTHER PRODUCT.....	9	13

(continued)

\* - MINING &amp; QUARRYING AND MANUFACTURING

\*\* - ISIC REVISION 03

TABLE 9: NO. OF ESTABLISHMENT\* & PERSONS ENGAED BY DIVISIONAL SECRETARY DIVISION &  
INDUSTRY DIVISION\*\* (ISIC 2 DIGIT LEVEL)  
MATALE DISTRICT - RURAL SECTOR - 1995

D.S.DIVISION & INDUSTRY DIVISION	NO. OF ESTABLISHMENTS	PERSONS ENGAED
<b>YATAWATTA</b>		
14 OTHER MINING & QUARRYING.....	15	63
15 FOOD PRODUCTS & BEVERAGES.....	126	229
16 TOBACCO PRODUCTS.....	97	276
17 TEXTILES.....	98	180
18 WEARING APPEREL DRESSING & DYING OF PUR.....	25	34
20 WOOD & WOOD PRODUCTS, EXCEPT FURNITURE.....	106	231
24 CHEMICALS & CHEMICAL PRODUCTS.....	4	12
25 RUBBER & PLASTICS PRODUCTS.....	21	49
26 OTHER NON-METALIC MINERAL PRODUCTS.....	22	59
28 FABRICATED METAL PRODUCTS, EXCEPT MACHINERY & EQUIPMENT...	17	24
36 MANU. OF FURNITURE, MANUFACTURING N.B.C.....	24	35
99 OTHER PRODUCT.....	7	11
<b>TOTAL.....</b>	<b>4,210</b>	<b>16,129</b>

\* - MINING & QUARRYING AND MANUFACTURING

\*\* - ISIC REVISION 03

**TABLE 10: DISTRIBUTION OF ESTABLISHMENT\* & PERSONS ENGAGED BY DIVISIONAL  
SECRETARY DIVISION & PERSONS ENGAGED SIZE CLASS  
MATALE DISTRICT - RURAL SECTOR - 1995**

D.S. DIVISION & INDUSTRY DIVISION	NO. OF ESTABLISHMENTS
<b>AMBANGANGA KORALAYA</b>	
<b>14 OTHER MINING &amp; QUARRYING</b>	
1 - 4.....	1
5 - 14.....	1
15 & ABOVE.....	3
<b>15 FOOD PRODUCTS &amp; BEVERAGES</b>	
1 - 4.....	31
5 - 14.....	1
<b>16 TOBACCO PRODUCTS</b>	
1 - 4.....	3
<b>17 TEXTILES</b>	
1 - 4.....	16
5 - 14.....	1
<b>18 WEARING APPEREL DRESSING &amp; DYING OF FUR</b>	
1 - 4.....	6
<b>20 WOOD &amp; WOOD PRODUCTS, EXCEPT FURNITURE</b>	
1 - 4.....	7
<b>24 CHEMICALS &amp; CHEMICAL PRODUCTS</b>	
1 - 4.....	2
<b>25 RUBBER &amp; PLASTICS PRODUCTS</b>	
1 - 4.....	12
5 - 14.....	4
<b>26 OTHER NON-METALIC MINERAL PRODUCTS</b>	
1 - 4.....	6
5 - 14.....	4
<b>28 FABRICATED METAL PRODUCTS, EXCEPT MACHINERY &amp; EQUIPMENT</b>	
1 - 4.....	18
<b>36 MANU. OF FURNITURE, MANUFACTURING N.E.C.</b>	
1 - 4.....	2
<b>DAMBULLA</b>	
<b>14 OTHER MINING &amp; QUARRYING</b>	
1 - 4.....	10
5 - 14.....	7
<b>15 FOOD PRODUCTS &amp; BEVERAGES</b>	
1 - 4.....	145
5 - 14.....	15
15 & ABOVE.....	15
<b>16 TOBACCO PRODUCTS</b>	
1 - 4.....	4
5 - 14.....	5
<b>17 TEXTILES</b>	
1 - 4.....	2
15 & ABOVE.....	1
<b>18 WEARING APPEREL DRESSING &amp; DYING OF FUR</b>	
1 - 4.....	19

(continued)

\* - MINING &amp; QUARRYING AND MANUFACTURING

TABLE 10: DISTRIBUTION OF ESTABLISHMENT\* & PERSONS ENGAGED BY DIVISIONAL  
SECRETARY DIVISION & PERSONS ENGAGED SIZE CLASS  
MATALE DISTRICT - RURAL SECTOR - 1995

D.S.DIVISION & INDUSTRY DIVISION	NO.OF ESTABLISHMENTS
19 TRAINING & DRESSING OF LEATHER, LEATHER GOODS & FOOTWEAR	
1 - 4.....	1
5 - 14.....	1
20 WOOD & WOOD PRODUCTS, EXCEPT FURNITURE	
1 - 4.....	44
5 - 14.....	3
21 PAPER & PAPER PRODUCTS	
5 - 14.....	1
22 PUBLISHING, PRINTING & REPRODUCTION OF RECORDED MEDIA	
1 - 4.....	1
24 CHEMICALS & CHEMICAL PRODUCTS	
1 - 4.....	1
5 - 14.....	1
25 RUBBER & PLASTICS PRODUCTS	
1 - 4.....	5
5 - 14.....	1
15 & ABOVE.....	1
26 OTHER NON-METALIC MINERAL PRODUCTS	
1 - 4.....	48
5 - 14.....	4
15 & ABOVE.....	1
27 BASIC METAL INDUSTRIES	
1 - 4.....	2
28 FABRICATED METAL PRODUCTS, EXCEPT MACHINERY & EQUIPMENT	
1 - 4.....	21
5 - 14.....	1
36 MANU.OF FURNITURE, MANUFACTURING N.B.C.	
1 - 4.....	1
99 OTHER PRODUCT	
1 - 4.....	4
5 - 14.....	1
15 & ABOVE.....	1
GALEWELA	
14 OTHER MINING & QUARRYING	
1 - 4.....	10
15 & ABOVE.....	1
15 FOOD PRODUCTS & BEVERAGES	
1 - 4.....	83
5 - 14.....	1
15 & ABOVE.....	1
16 TOBACCO PRODUCTS	
1 - 4.....	19
5 - 14.....	8
17 TEXTILES	
1 - 4.....	1
19 WEARING APPEREL DRESSING & DYING OF FUR	
1 - 4.....	10

(continued)

\* - MINING &amp; QUARRYING AND MANUFACTURING



TABLE 10: DISTRIBUTION OF ESTABLISHMENT\* & PERSONS ENGAGED BY DIVISIONAL SECRETARY DIVISION & PERSONS ENGAGED SIZE CLASS  
MATALE DISTRICT - RURAL SECTOR - 1995

D.S.DIVISION & INDUSTRY DIVISION	NO. OF ESTABLISHMENTS
19 TRAINING & DRESSING OF LEATHER, LEATHER GOODS & FOOTWEAR	
1 - 4.....	2
20 WOOD & WOOD PRODUCTS, EXCEPT FURNITURE	
1 - 4.....	24
5 - 14.....	2
24 CHEMICALS & CHEMICAL PRODUCTS	
1 - 4.....	3
26 OTHER NON-METALIC MINERAL PRODUCTS	
1 - 4.....	17
28 FABRICATED METAL PRODUCTS, EXCEPT MACHINERY & EQUIPMENT	
1 - 4.....	12
36 MANU. OF FURNITURE, MANUFACTURING N.E.C.	
1 - 4.....	11
5 - 14.....	2
<b>LAGGALA PALLGAMA</b>	
14 OTHER MINING & QUARRYING	
1 - 4.....	66
5 - 14.....	47
15 & ABOVE.....	4
15 FOOD PRODUCTS & BEVERAGES	
1 - 4.....	72
5 - 14.....	5
15 & ABOVE.....	2
16 TOBACCO PRODUCTS	
1 - 4.....	14
5 - 14.....	3
17 TEXTILES	
1 - 4.....	2
18 WEAVING APPERBEL DRESSING & DYING OF PUR	
1 - 4.....	7
15 & ABOVE.....	1
20 WOOD & WOOD PRODUCTS, EXCEPT FURNITURE	
1 - 4.....	25
5 - 14.....	1
21 PAPER & PAPER PRODUCTS	
1 - 4.....	1
26 OTHER NON-METALIC MINERAL PRODUCTS	
1 - 4.....	10
5 - 14.....	2
28 FABRICATED METAL PRODUCTS, EXCEPT MACHINERY & EQUIPMENT	
1 - 4.....	10
<b>MATALE</b>	
14 OTHER MINING & QUARRYING	
1 - 4.....	35
5 - 14.....	19
15 & ABOVE.....	5

(continued)

\* - MINING &amp; QUARRYING AND MANUFACTURING

TABLE 10: DISTRIBUTION OF ESTABLISHMENT\* & PERSONS ENGAGED BY DIVISIONAL  
SECRETARY DIVISION & PERSONS ENGAGED SIZE CLASS  
MATALE DISTRICT - RURAL SECTOR - 1995

D.S.DIVISION & INDUSTRY DIVISION	NO.OF ESTABLISHMENTS
<b>15 FOOD PRODUCTS &amp; BEVERAGES</b>	
1 - 4.....	65
5 - 14.....	5
<b>16 TOBACCO PRODUCTS</b>	
1 - 4.....	11
15 & ABOVE.....	3
<b>17 TEXTILES</b>	
1 - 4.....	6
5 - 14.....	3
15 & ABOVE.....	4
<b>18 WEARING APPEREL DRESSING &amp; DYING OF FUR</b>	
1 - 4.....	21
15 & ABOVE.....	1
<b>19 TRAINING &amp; DRESSING OF LEATHER, LEATHER GOODS &amp; FOOTWEAR</b>	
1 - 4.....	1
<b>20 WOOD &amp; WOOD PRODUCTS, EXCEPT FURNITURE</b>	
1 - 4.....	14
5 - 14.....	3
<b>21 PAPER &amp; PAPER PRODUCTS</b>	
1 - 4.....	1
<b>24 CHEMICALS &amp; CHEMICAL PRODUCTS</b>	
1 - 4.....	2
5 - 14.....	1
<b>25 RUBBER &amp; PLASTICS PRODUCTS</b>	
1 - 4.....	5
5 - 14.....	1
<b>26 OTHER NON-METALIC MINERAL PRODUCTS</b>	
1 - 4.....	18
5 - 14.....	10
15 & ABOVE.....	3
<b>28 FABRICATED METAL PRODUCTS, EXCEPT MACHINERY &amp; EQUIPMENT</b>	
1 - 4.....	14
5 - 14.....	1
<b>36 MANU.OF FURNITURE, MANUFACTURING N.B.C.</b>	
1 - 4.....	27
5 - 14.....	1
<b>NAULA</b>	
<b>14 OTHER MINING &amp; QUARRYING</b>	
1 - 4.....	47
5 - 14.....	9
15 & ABOVE.....	13
<b>15 FOOD PRODUCTS &amp; BEVERAGES</b>	
1 - 4.....	98
5 - 14.....	2
15 & ABOVE.....	1

(continued)

\* - MINING &amp; QUARRYING AND MANUFACTURING

TABLE 10: DISTRIBUTION OF ESTABLISHMENT\* & PERSONS ENGAGED BY DIVISIONAL  
SECRETARY DIVISION & PERSONS ENGAGED SIZE CLASS  
MATALE DISTRICT - RURAL SECTOR - 1995

D.S. DIVISION & INDUSTRY DIVISION	NO. OF ESTABLISHMENTS
<b>16 TOBACCO PRODUCTS</b>	
1 - 4.....	8
5 - 14.....	1
15 & ABOVE.....	4
<b>17 TEXTILES</b>	
1 - 4.....	1
5 - 14.....	3
15 & ABOVE.....	1
<b>18 WEARING APPEREL DRESSING &amp; DYING OF FUR</b>	
1 - 4.....	21
5 - 14.....	1
15 & ABOVE.....	2
<b>20 WOOD &amp; WOOD PRODUCTS, EXCEPT FURNITURE</b>	
1 - 4.....	7
5 - 14.....	1
15 & ABOVE.....	1
<b>21 PAPER &amp; PAPER PRODUCTS</b>	
1 - 4.....	1
<b>22 PUBLISHING, PRINTING &amp; REPRODUCTION OF RECORDED MEDIA</b>	
1 - 4.....	1
<b>26 OTHER NON-METALIC MINERAL PRODUCTS</b>	
1 - 4.....	50
5 - 14.....	4
<b>28 FABRICATED METAL PRODUCTS, EXCEPT MACHINERY &amp; EQUIPMENT</b>	
1 - 4.....	13
<b>36 MANU. OF FURNITURE, MANUFACTURING N.B.C.</b>	
1 - 4.....	68
<b>99 OTHER PRODUCT</b>	
1 - 4.....	3
5 - 14.....	1
<b>PALLEPOLA</b>	
<b>14 OTHER MINING &amp; QUARRYING</b>	
1 - 4.....	9
5 - 14.....	18
15 & ABOVE.....	2
<b>15 FOOD PRODUCTS &amp; BEVERAGES</b>	
1 - 4.....	115
5 - 14.....	6
15 & ABOVE.....	2
<b>16 TOBACCO PRODUCTS</b>	
1 - 4.....	69
5 - 14.....	13
15 & ABOVE.....	23
<b>17 TEXTILES</b>	
1 - 4.....	6
5 - 14.....	1

(continued)

\* - MINING &amp; QUARRYING AND MANUFACTURING

TABLE 10: DISTRIBUTION OF ESTABLISHMENT\* & PERSONS ENGAGED BY DIVISIONAL  
SECRETARY DIVISION & PERSONS ENGAGED SIZE CLASS  
NATALE DISTRICT - RURAL SECTOR - 1995

D.S.DIVISION & INDUSTRY DIVISION	NO.OF ESTABLISHMENTS
18 WEARING APPEREL DRESSING & DYING OF FUR	
1 - 4.....	30
19 TRAINING & DRESSING OF LEATHER, LEATHER GOODS & FOOTWEAR	
1 - 4.....	1
20 WOOD & WOOD PRODUCTS, EXCEPT FURNITURE	
1 - 4.....	49
5 - 14.....	2
15 & ABOVE.....	1
24 CHEMICALS & CHEMICAL PRODUCTS	
1 - 4.....	1
25 RUBBER & PLASTICS PRODUCTS	
15 & ABOVE.....	1
26 OTHER NON-METALIC MINERAL PRODUCTS	
1 - 4.....	45
5 - 14.....	12
28 FABRICATED METAL PRODUCTS, EXCEPT MACHINERY & EQUIPMENT	
1 - 4.....	23
36 MANU.OF FURNITURE, MANUFACTURING M.B.C.	
1 - 4.....	52
5 - 14.....	1
15 & ABOVE.....	1
99 OTHER PRODUCT	
1 - 4.....	1
<b>RATTOTA</b>	
14 OTHER MINING & QUARRYING	
1 - 4.....	11
5 - 14.....	14
15 & ABOVE.....	10
15 FOOD PRODUCTS & BEVERAGES	
1 - 4.....	92
5 - 14.....	4
15 & ABOVE.....	3
16 TOBACCO PRODUCTS	
1 - 4.....	69
5 - 14.....	2
17 TEXTILES	
1 - 4.....	13
18 WEARING APPEREL DRESSING & DYING OF FUR	
1 - 4.....	28
5 - 14.....	2
20 WOOD & WOOD PRODUCTS, EXCEPT FURNITURE	
1 - 4.....	123
5 - 14.....	2
15 & ABOVE.....	1
21 PAPER & PAPER PRODUCTS	
1 - 4.....	2

(continued)

\* - MINING &amp; QUARRYING AND MANUFACTURING

TABLE 10: DISTRIBUTION OF ESTABLISHMENT\* & PERSONS ENGAGED BY DIVISIONAL  
SECRETARY DIVISION & PERSONS ENGAGED SIZE CLASS  
MATALE DISTRICT - RURAL SECTOR - 1995

D.S.DIVISION & INDUSTRY DIVISION	NO.OF ESTABLISHMENTS
22 PUBLISHING, PRINTING & REPRODUCTION OF RECORDED MEDIA	
1 - 4.....	1
24 CHEMICALS & CHEMICAL PRODUCTS	
1 - 4.....	4
5 - 14.....	1
25 RUBBER & PLASTICS PRODUCTS	
1 - 4.....	3
26 OTHER NON-METALIC MINERAL PRODUCTS	
1 - 4.....	28
5 - 14.....	8
28 FABRICATED METAL PRODUCTS, EXCEPT MACHINERY & EQUIPMENT	
1 - 4.....	17
5 - 14.....	2
36 MANU. OF FURNITURE, MANUFACTURING N.E.C.	
1 - 4.....	30
99 OTHER PRODUCT	
1 - 4.....	2
UKUWELA	
14 OTHER MINING & QUARRYING	
1 - 4.....	11
5 - 14.....	6
15 & ABOVE.....	1
15 FOOD PRODUCTS & BEVERAGES	
1 - 4.....	160
5 - 14.....	7
15 & ABOVE.....	6
16 TOBACCO PRODUCTS	
1 - 4.....	205
5 - 14.....	3
15 & ABOVE.....	1
17 TEXTILES	
1 - 4.....	37
5 - 14.....	4
15 & ABOVE.....	3
18 WEARING APPEREL DRESSING & DYING OF FUR	
1 - 4.....	56
5 - 14.....	2
15 & ABOVE.....	2
19 TRAINING & DRESSING OF LEATHER, LEATHER GOODS & FOOTWEAR	
1 - 4.....	3
20 WOOD & WOOD PRODUCTS, EXCEPT FURNITURE	
1 - 4.....	94
5 - 14.....	8
15 & ABOVE.....	3
21 PAPER & PAPER PRODUCTS	
1 - 4.....	2
5 - 14.....	1

(continued)

\* - MINING &amp; QUARRYING AND MANUFACTURING

TABLE 10: DISTRIBUTION OF ESTABLISHMENT\* & PERSONS ENGAGED BY DIVISIONAL  
SECRETARY DIVISION & PERSONS ENGAGED SIZE CLASS  
MATALE DISTRICT - RURAL SECTOR - 1995

D.S. DIVISION & INDUSTRY DIVISION	NO. OF ESTABLISHMENTS
22 PUBLISHING, PRINTING & REPRODUCTION OF RECORDED MEDIA	
1 - 4.....	4
5 - 14.....	3
24 CHEMICALS & CHEMICAL PRODUCTS	
1 - 4.....	4
5 - 14.....	1
25 RUBBER & PLASTICS PRODUCTS	
5 - 14.....	2
15 & ABOVE.....	1
26 OTHER NON-METALIC MINERAL PRODUCTS	
1 - 4.....	21
5 - 14.....	6
15 & ABOVE.....	2
27 BASIC METAL INDUSTRIES	
1 - 4.....	1
5 - 14.....	2
28 FABRICATED METAL PRODUCTS, EXCEPT MACHINERY & EQUIPMENT	
1 - 4.....	62
5 - 14.....	1
36 MANU. OF FURNITURE, MANUFACTURING N.E.C.	
1 - 4.....	19
5 - 14.....	2
99 OTHER PRODUCT	
1 - 4.....	5
5 - 14.....	1
WILGANUWA	
14 OTHER MINING & QUARRYING	
1 - 4.....	21
5 - 14.....	2
15 & ABOVE.....	2
15 FOOD PRODUCTS & BEVERAGES	
1 - 4.....	161
16 TOBACCO PRODUCTS	
1 - 4.....	7
5 - 14.....	1
17 TEXTILES	
1 - 4.....	14
18 WEARING APPEREL DRESSING & DYING OF FUR	
1 - 4.....	34
20 WOOD & WOOD PRODUCTS, EXCEPT FURNITURE	
1 - 4.....	77
24 CHEMICALS & CHEMICAL PRODUCTS	
1 - 4.....	2
27 BASIC METAL INDUSTRIES	
1 - 4.....	2

(continued)

\* - MINING &amp; QUARRYING AND MANUFACTURING

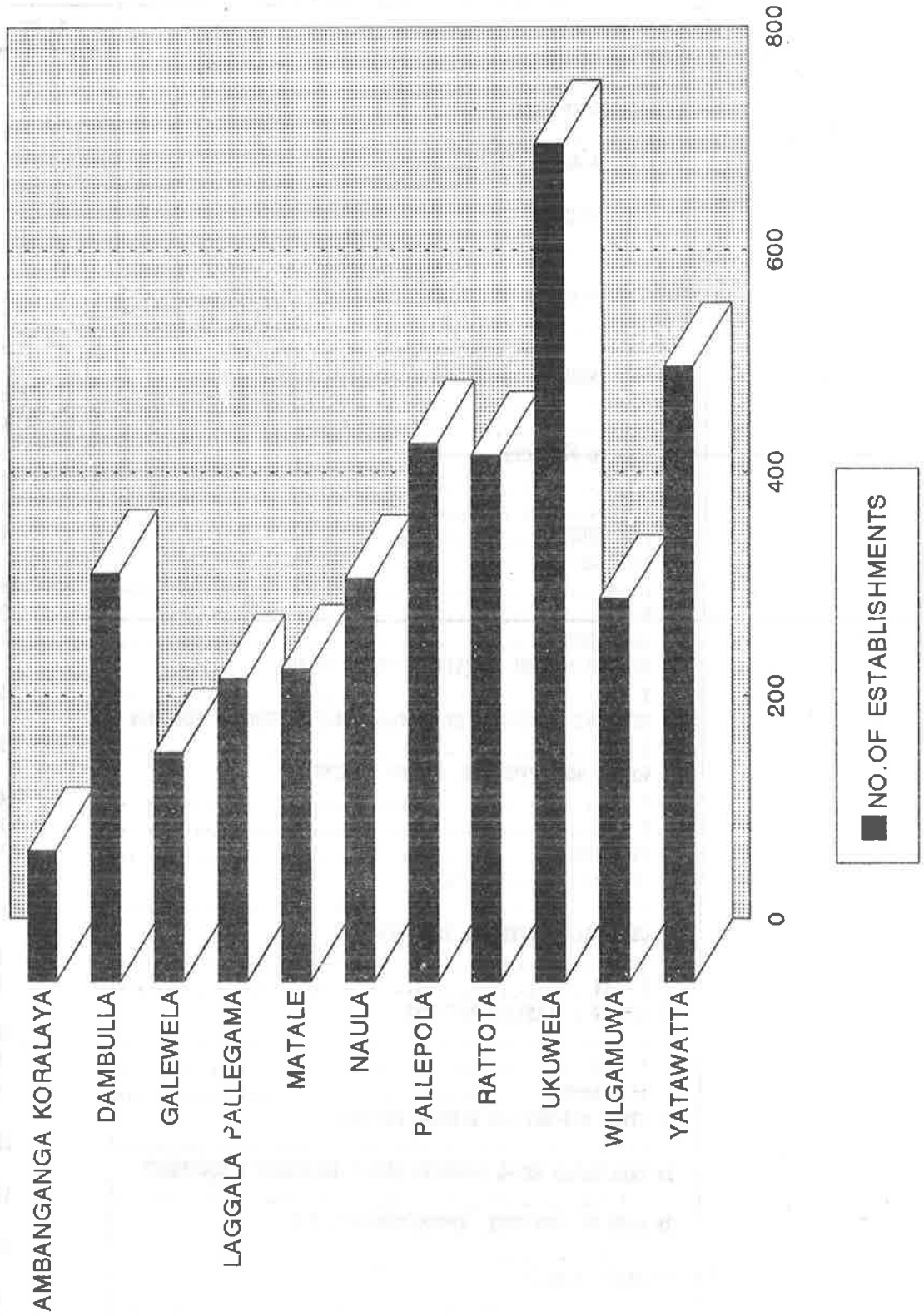


TABLE 10: DISTRIBUTION OF ESTABLISHMENT\* & PERSONS ENGAGED BY DIVISIONAL-  
SECRETARY DIVISION & PERSONS ENGAGED SIZE CLASS  
MATALE DISTRICT - RURAL SECTOR - 1995

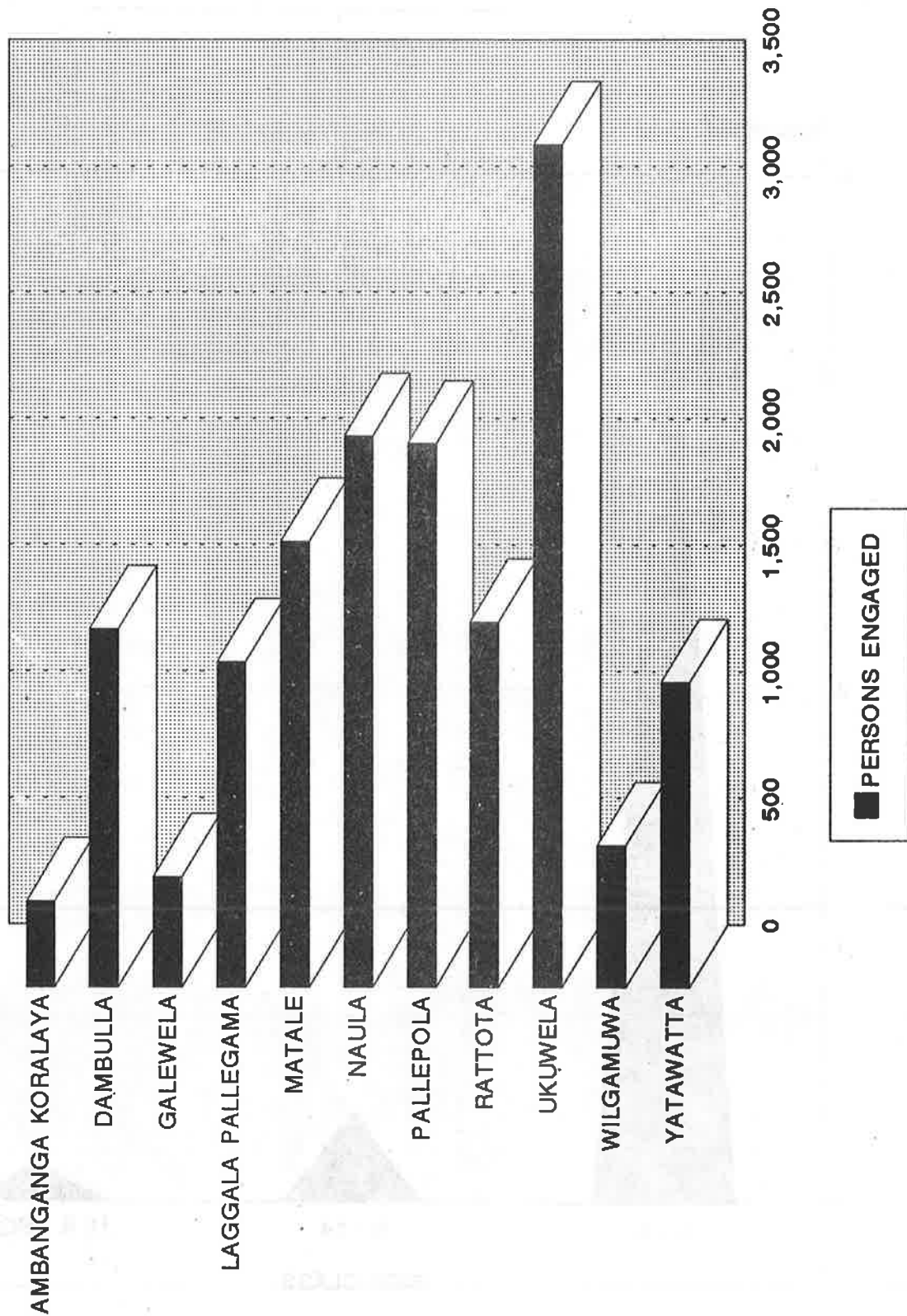
D.S. DIVISION & INDUSTRY DIVISION	NO. OF ESTABLISHMENTS
28 FABRICATED METAL PRODUCTS, EXCEPT MACHINERY & EQUIPMENT	
1 - 4.....	16
36 MANU. OF FURNITURE, MANUFACTURING N.E.C.	
1 - 4.....	1
99 OTHER PRODUCT	
1 - 4.....	4
YATAWATTA	
14 OTHER MINING & QUARRYING	
1 - 4.....	10
5 - 14.....	5
15 FOOD PRODUCTS & BEVERAGES	
1 - 4.....	120
5 - 14.....	6
16 TOBACCO PRODUCTS	
1 - 4.....	84
5 - 14.....	9
15 & ABOVE.....	4
17 TEXTILES	
1 - 4.....	84
5 - 14.....	3
15 & ABOVE.....	1
18 WEARING APPEREL DRESSING & DYEING OF FUR	
1 - 4.....	25
19 TRAINING & DRESSING OF LEATHER, LEATHER GOODS & FOOTWEAR	
1 - 4.....	1
20 WOOD & WOOD PRODUCTS, EXCEPT FURNITURE	
1 - 4.....	104
5 - 14.....	1
15 & ABOVE.....	1
21 PAPER & PAPER PRODUCTS	
1 - 4.....	2
24 CHEMICALS & CHEMICAL PRODUCTS	
1 - 4.....	3
5 - 14.....	1
25 RUBBER & PLASTICS PRODUCTS	
1 - 4.....	18
5 - 14.....	2
15 & ABOVE.....	1
26 OTHER NON-METALIC MINERAL PRODUCTS	
1 - 4.....	22
28 FABRICATED METAL PRODUCTS, EXCEPT MACHINERY & EQUIPMENT	
1 - 4.....	17
36 MANU. OF FURNITURE, MANUFACTURING N.E.C.	
1 - 4.....	24
99 OTHER PRODUCT	
1 - 4.....	4
TOTAL.....	4,210

\* - MINING & QUARRYING AND MANUFACTURING

# NO.OF ESTABLISHMENTS BY D.S.DIVISION RURAL SECTOR - 1995 MATALE DISTRICT

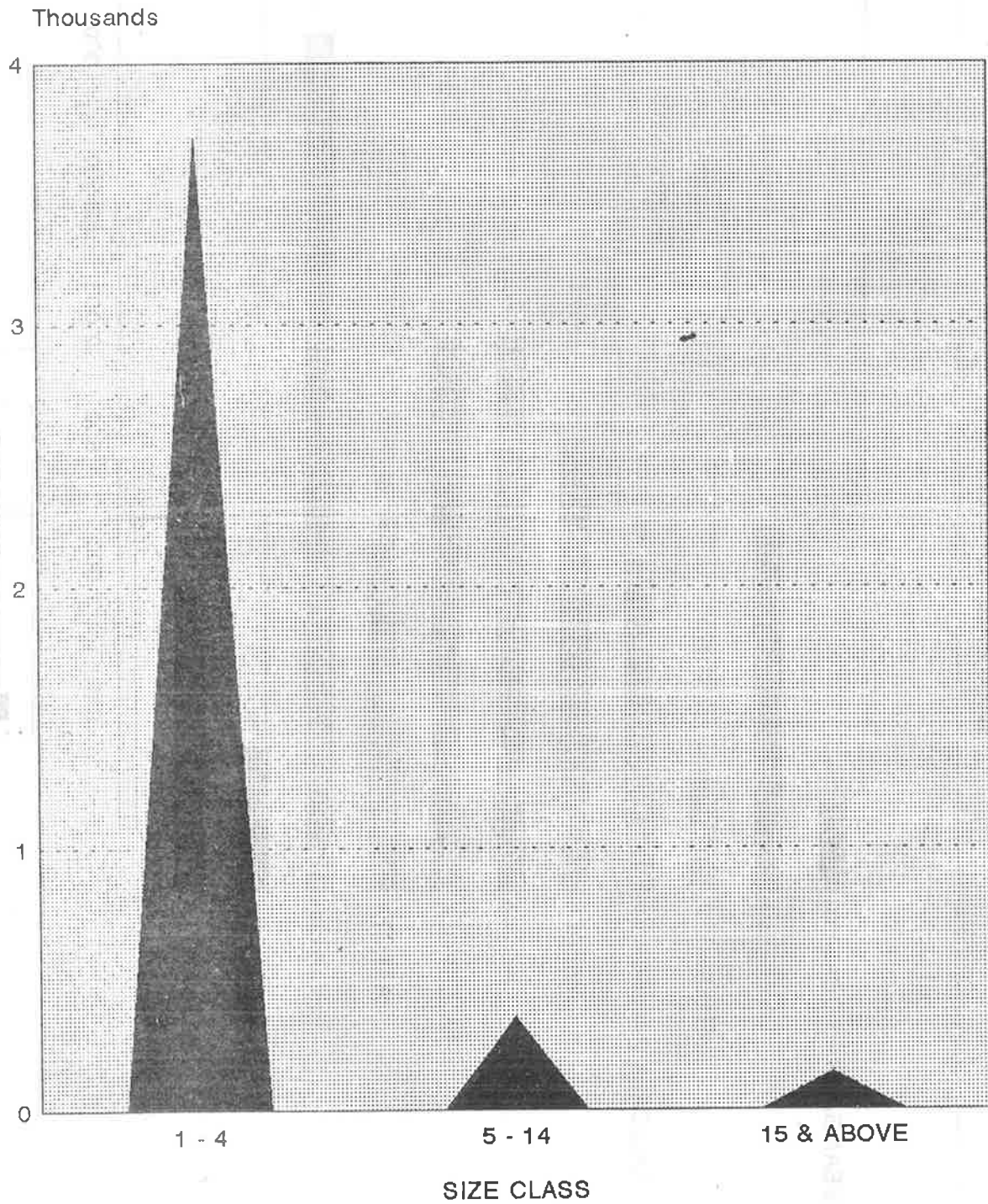


# PERSONS ENGAGED BY D.S.DIVISION RURAL SECTOR - 1995 MATALE DISTRICT



# NO.OF ESTABLISHMENT BY PERSONS ENGAGED SIZE CLASS

RURAL SECTOR - 1995  
MATALE DISTRICT



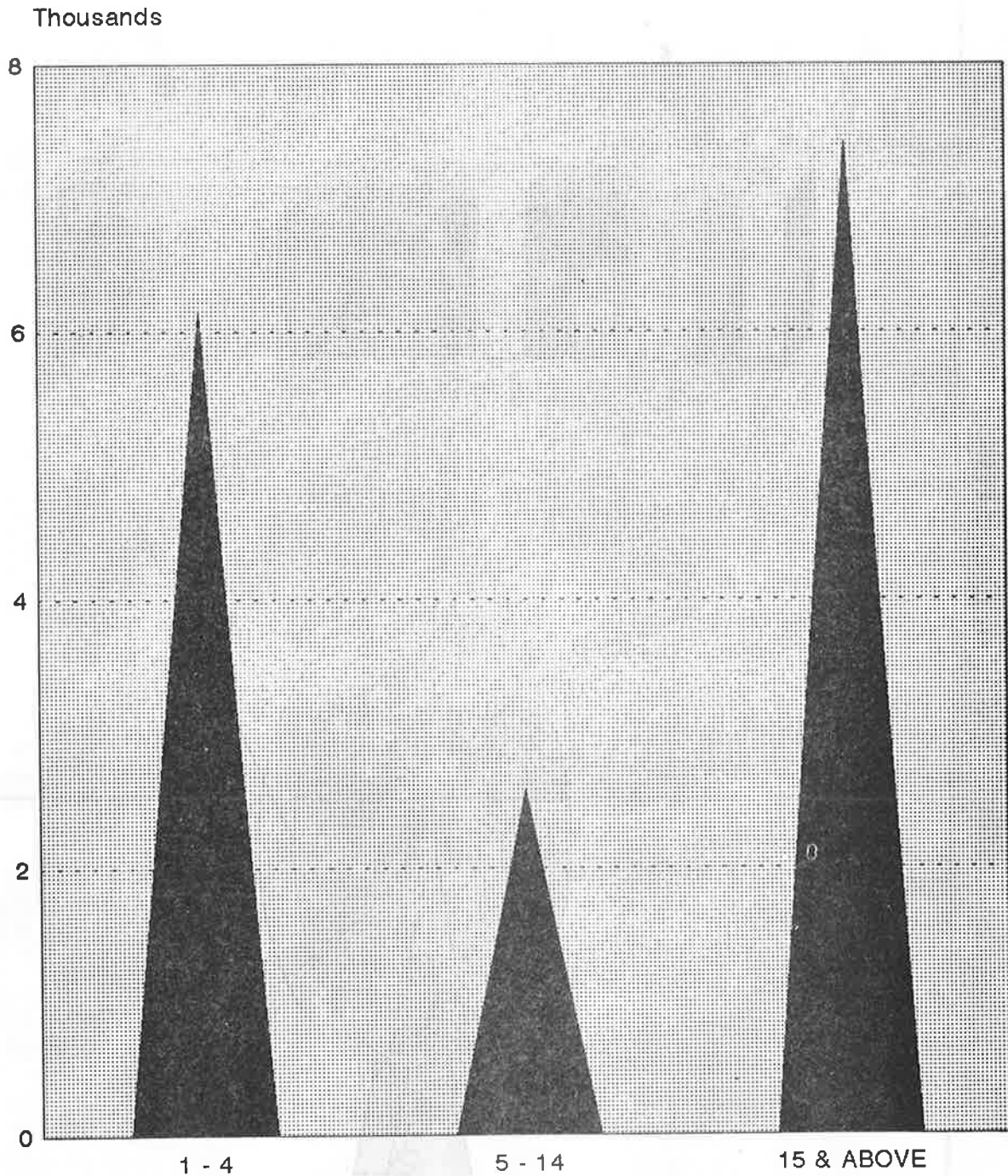
▲ NO.OF ESTABLISHMENTS



# PERSONS ENGAGED BY SIZE CLASS

## RURAL SECTOR - 1995

### MATALE DISTRICT

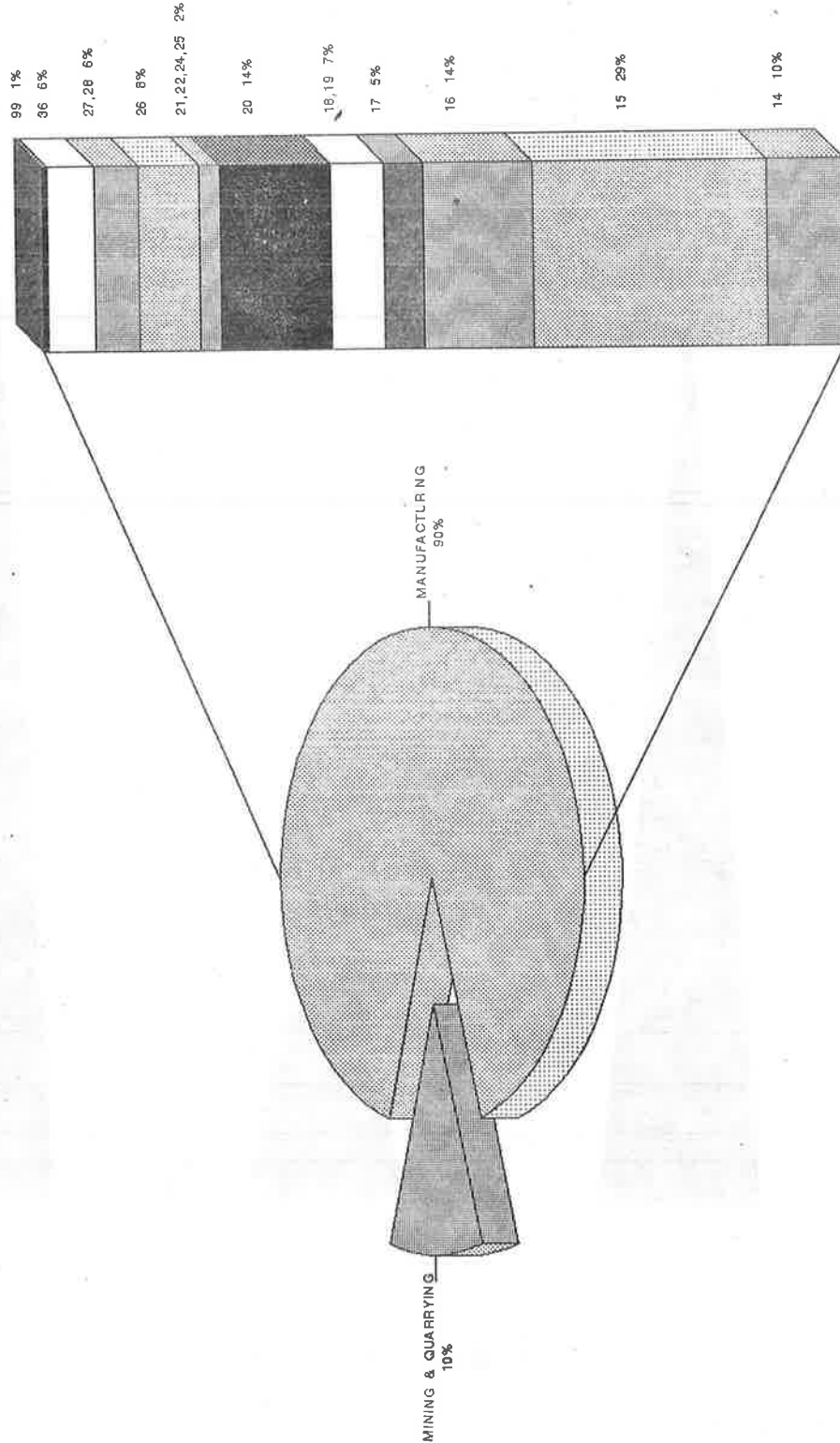


▲ PERSONS ENGAGED

# NO.OF ESTABLISHMENTS BY INDUSTRY DIVISION

RURAL SECTOR - 1995

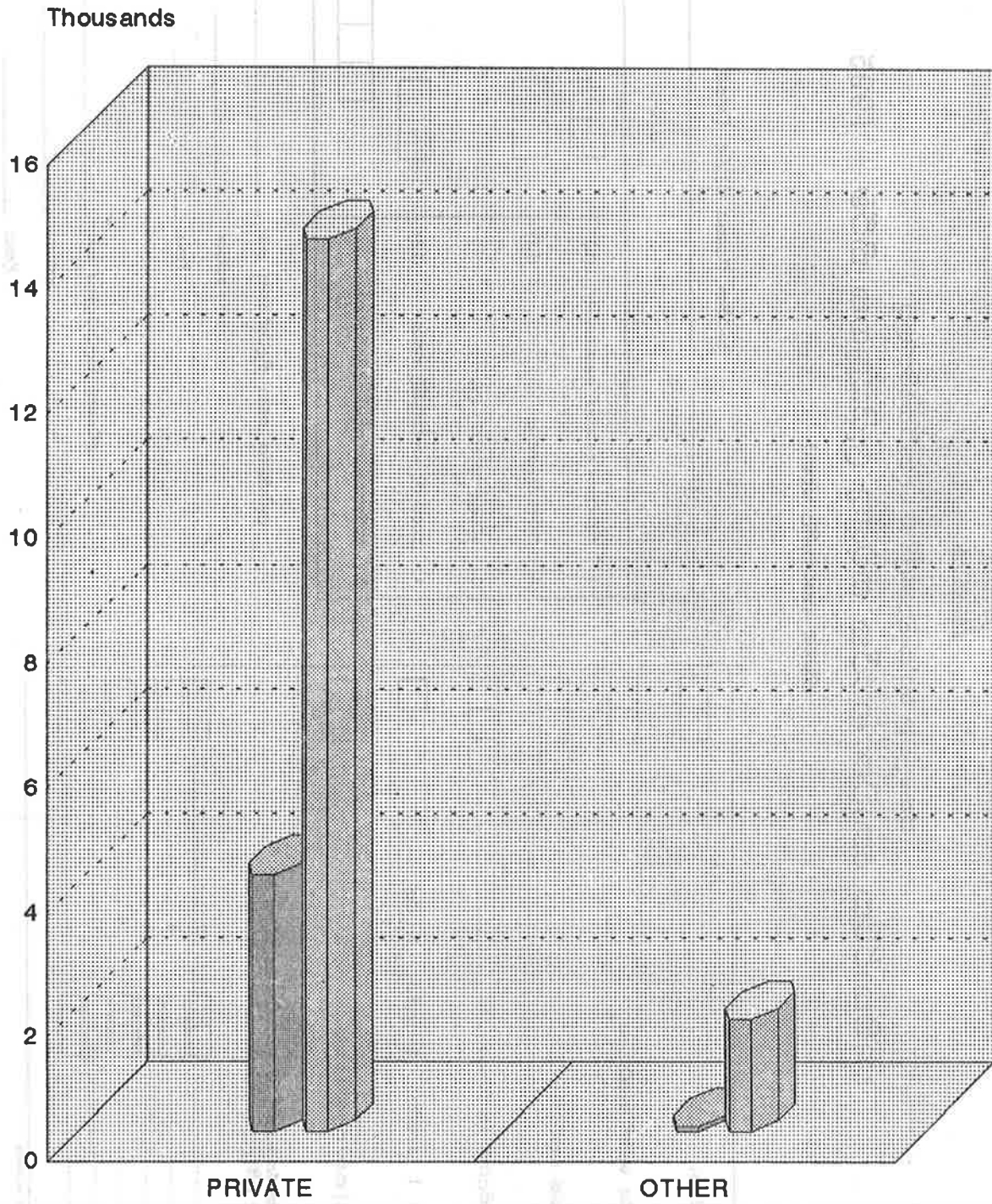
MATALE DISTRICT



# NO.OF ESTABLISHMENT & PERSONS ENGAGED BY TYPE OF SECTOR

## RURAL SECTOR - 1995

### MATALE DISTRICT



■ NO.OF ESTABLISHMENT ■ PERSONS ENGAGED

L   
 පොත්  
 අංකය



**ජනලේඛන හා සංඛ්‍යාලේඛන දෙපාර්තමේන්තුව**  
**කෘෂිකාර්මික නොවන ආර්ථික කටයුතු ලැයිස්තුගත කිරීම - 1995**  
 (සියළුම ගොවිතැනිලි පදනා)

ප්‍රාථමික ඒකකය පිළිබඳ විස්තර

01. දිස්ත්‍රික්කය:.....	<input type="text"/>	<input type="text"/>	
02. ප්‍රාදේශීය ලේකම් කොට්ඨාසය:.....	<input type="text"/>	<input type="text"/>	
03. මැතිවරණ කොට්ඨාසය:.....	<input type="text"/>	<input type="text"/>	
04. ග්‍රාම නිලධාරී කොට්ඨාසය:.....	<input type="text"/>	<input type="text"/>	
05. අංශය: 1. නාගරික 2. ග්‍රාමීය 3. වතු	<input type="text"/>	<input type="text"/>	<input type="text"/>
06. ම.ක.ස./ න.ස./ ප්‍රාදේශීය සභාව:.....	<input type="text"/>	<input type="text"/>	
07. ප්‍රාථමික ඒකකය තුළ පිහිටි නාගරික කොට්ඨාස/ ගම්/ වතු/වල නම්:	<input type="text"/>	<input type="text"/>	<input type="text"/>
1	<input type="text"/>	<input type="text"/>	<input type="text"/>
2	<input type="text"/>	<input type="text"/>	<input type="text"/>
3	<input type="text"/>	<input type="text"/>	<input type="text"/>
4	<input type="text"/>	<input type="text"/>	<input type="text"/>
5	<input type="text"/>	<input type="text"/>	<input type="text"/>
6	<input type="text"/>	<input type="text"/>	<input type="text"/>
7	<input type="text"/>	<input type="text"/>	<input type="text"/>
8	<input type="text"/>	<input type="text"/>	<input type="text"/>
9	<input type="text"/>	<input type="text"/>	<input type="text"/>
10	<input type="text"/>	<input type="text"/>	<input type="text"/>
11	<input type="text"/>	<input type="text"/>	<input type="text"/>
12	<input type="text"/>	<input type="text"/>	<input type="text"/>

විස්තරය	පිටු ගණන	ඒකක ගණන
1. නිවාස හා අනෙකුත් ගොවිතැනිලි (L)	<input type="text"/>	<input type="text"/>
2. කාර්මික ගණන (L1)	<input type="text"/>	<input type="text"/>
3. වෙළෙඳ හා සේවා ආයතන (L3)	<input type="text"/>	<input type="text"/>
4. සාදන ලද ගොවිතැනිලි ගණන	<input type="text"/>	<input type="text"/>
5. සාමාන්‍යයෙන් පදිංචි පුද්ගලයින් ගණන	<input type="text"/>	<input type="text"/>

ලැයිස්තුගත කරන නිලධාරියාගේ නම: .....

අත්සන: .....

දිනය: .....

අධ්‍යක්ෂ නිලධාරියාගේ නම: .....

අත්සන: .....

දිනය: .....

Printed by Department of Census and Statistics





L1  89  
 අංකය

ජනලේඛන හා සංඛ්‍යාලේඛන දෙපාර්තමේන්තුව  
 කෘෂිකාර්මික තොටන ආර්ථික කටයුතු ලැයිස්තුගත කිරීම - 1995  
 (තර්මාන්ත ආයතන සඳහා)

01. දිස්ත්‍රික්කය:   04. අංශය: 1. නාගරික 2. ග්‍රාමීය 3. වතු
02. ප්‍රාදේශීය ලේකම් කොට්ඨාසය:   05. මනාස./ නාය./ ප්‍රාදේශීය සහතික:
03. ග්‍රාම නිලධාරී කොට්ඨාස අංකය:  නම:

1	2	3	4(*)	5(*)	6	7	8	9	10
(L) ලේඛනයේ අනුමත අංකය	ව්‍යාපාරයේ/ අයිතිකරුගේ නම (ව්‍යාපාරයේ නමක් නොමැති නම් අයිතිකරුගේ නම ලැබූ කාර්යය, ව්‍යාපාරයේ/ අයිතිකරුගේ නම ඉංග්‍රීසි කැපිටල් අකුරින් ලියන්න.)	කැපුම් ලිපිකය (අංකය, විදිය, ගම්, කැපුම් කෙරෙහි පිළිවෙත් ඉංග්‍රීසි කැපිටල් අකුරින් ලියන්න, කැපුම් ලිපිකයක් නොමැති නම් පිහිටි පිළිබඳ විස්තර ඇතුළත් කරන්න.)	4(*) (ශ්‍රේණි ව ප්‍රභේදය) (අග්‍රණය වලට) (ප්‍රභේදය)	5(*) (ශ්‍රේණි ව ප්‍රභේදය) (අග්‍රණය වලට) (ප්‍රභේදය)	6 කර්මාන්තයේ ස්වභාවය	7 ප්‍රධාන නිෂ්පාදන (නිෂ්පාදන කිහිපයක් ඇති විට වටිනාකම අඩුම ප්‍රධාන නිෂ්පාදන දෙක ලැබූ කාර්යයන්.)	8 නිෂ්පාදන	9 ප්‍රධාන නිෂ්පාදන (ශ්‍රේණි ව ප්‍රභේදය) (අග්‍රණය වලට) (ප්‍රභේදය)	10 වෙනත් කරුණු
						1.			
						2.			
						1.			
						2.			
						1.			
						2.			
						1.			
						2.			
						1.			
						2.			
						1.			
						2.			
						1.			
						2.			
						1.			
						2.			
						1.			
						2.			
						1.			
						2.			

பிழைப்புக் கடினம்

1	2	3	4(*)	5(*)	6	7	8	9	10
கட்டுப்பாட்டுத் துறை	Daxararal/ ஏஜென்ஸி கமிஷன் (Daxararal/ ஏஜென்ஸி கமிஷன்/ ஏஜென்ஸி கமிஷன்) Daxararal/ ஏஜென்ஸி கமிஷன்/ ஏஜென்ஸி கமிஷன்.	கார்ப்பரேட் கமிஷன் (Daxararal, Daxararal, Daxararal) கார்ப்பரேட் கமிஷன்/ கமிஷன்/ கமிஷன்/ கமிஷன்.	கார்ப்பரேட் கமிஷன்/ கமிஷன்/ கமிஷன்/ கமிஷன்.	கார்ப்பரேட் கமிஷன்/ கமிஷன்/ கமிஷன்/ கமிஷன்.	கார்ப்பரேட் கமிஷன்/ கமிஷன்/ கமிஷன்/ கமிஷன்.	கார்ப்பரேட் கமிஷன்/ கமிஷன்/ கமிஷன்/ கமிஷன்.	கார்ப்பரேட் கமிஷன்/ கமிஷன்/ கமிஷன்/ கமிஷன்.	கார்ப்பரேட் கமிஷன்/ கமிஷன்/ கமிஷன்/ கமிஷன்.	கார்ப்பரேட் கமிஷன்/ கமிஷன்/ கமிஷன்/ கமிஷன்.

4(\*) ஃபர்ஸ்ட் கமிஷன்: 1. கமிஷன் 2. கமிஷன் 3. கமிஷன் 4. கமிஷன்  
 5(\*) ஃபர்ஸ்ட் கமிஷன்: 1. கமிஷன் 2. கமிஷன் 3. கமிஷன் 4. கமிஷன்

L3  83  
 අංකය

ජනලේඛන හා සංඛ්‍යාලේඛන දෙපාර්තමේන්තුව  
 කාර්මිකාර්මික නොවන ආර්ථික කටයුතු ලැයිස්තුගත කිරීම - 1995

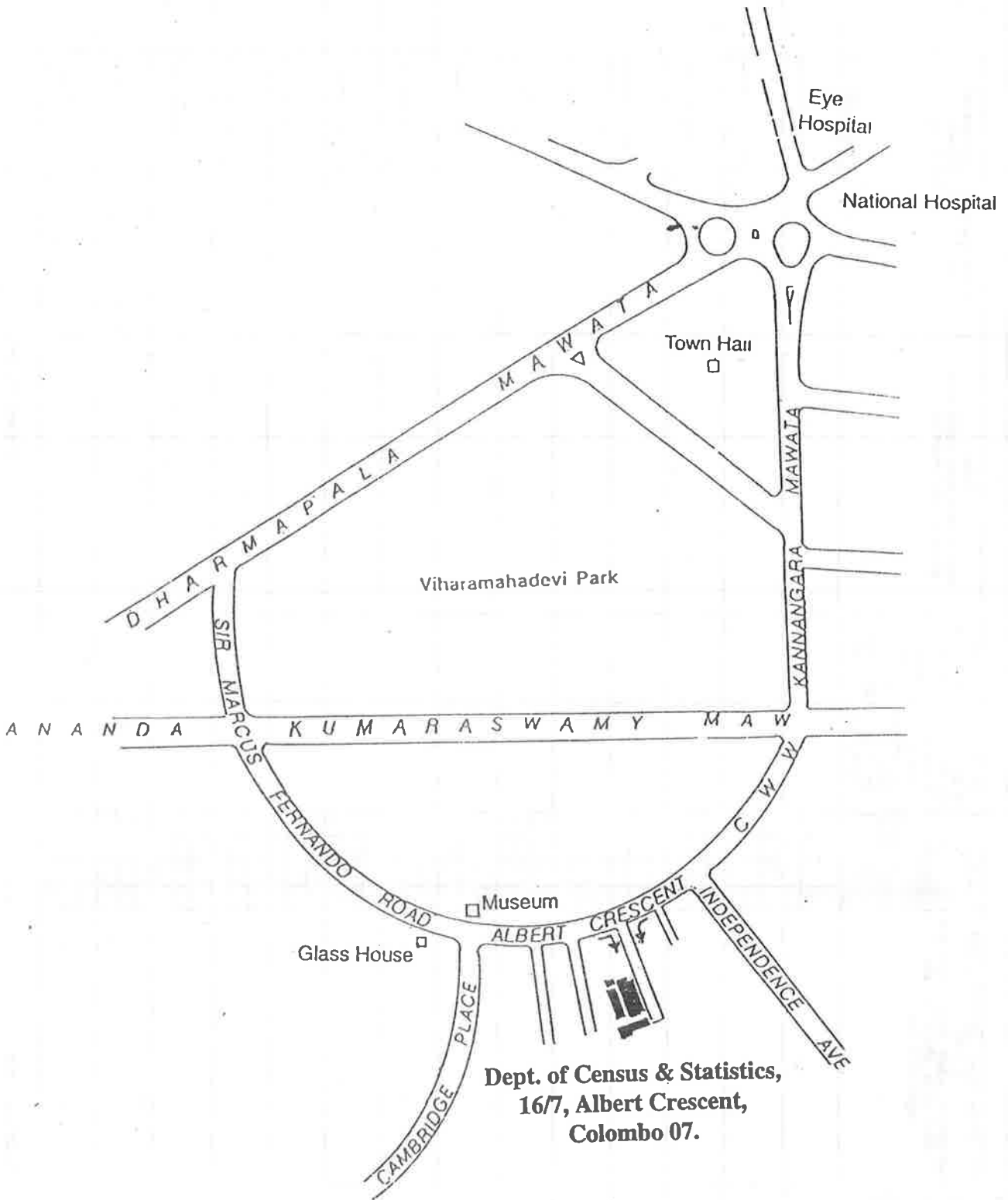
(ලොව්නැගිලි ඉදිකිරීම පදනම - 1995 ජනවාරි 01 සිට ජූනි 30 දක්වා)

01. දිස්ත්‍රික්කය:.....   04. අංකය: 1. තාගේක 2. ග්‍රාමීය 3. වතු
02. ප්‍රාදේශීය ලේකම් කොට්ඨාශය:.....   05. ම.න.ය./ න.ය./ ප්‍රාදේශීය සභාව:.....
03. ග්‍රාම නිලධාරී කොට්ඨාශ අංකය:..... නම:.....

1	2	3	4	5	6	7	8
සාරාංශය ලැයිස්තුවේ අංකය	මෙම ස්ථානයේ පිළිබඳ දේශීය සේවකයන් (එකම ස්ථානයේ ඉදිකිරීම් සිදුකරමින් පවතින අතර විවිධ ප්‍රධාන ඉදිකිරීම් වර්ග අතර අනුපිළිවෙලින් ලියාපදිංචි වී ඇත.)	ස්ථානය:	1995 ජනවාරි 01 සිට ජූනි 30 තෙක් කරන ලද වැඩ වෙනුවෙන් දරණ ලද (අදාළවන්නාවූ කාරක ලද) විට විකල්ප (රැකියාව)	ඉදිකිරීම් පදනම දෙපාර්තමේන්තුව රජයේ -1 විද්‍යාල -2 මහජන -3 අදාළ කේතය ලියාපදිංචි.	සිසුවා (මෙම ස්ථානයේ පදනම ප්‍රමාණවත් වීමකට පත්වීමට පෙර)	ඉදිකිරීම් කටයුතු කරන (කොන්ක්‍රීට්/ අලුතින්) නම් ලියාපදිංචි හෝ ද්‍රව්‍යාංග අංකය	වෙනත් සටහන්
1.							
2.							
3.							
1.							
2.							
3.							
1.							
2.							
3.							
1.							
2.							
3.							
1.							
2.							
3.							
1.							
2.							
3.							

பிழி ஏ-மடி	1	2	3	4	5	6	7	8
<p>மாண்புமிகு சிவசேனா மருத்துவ அமைச்சர்</p>	<p>(L) ஒன்றிய அமைச்சர்</p>	<p>மேலே பட்டியலில் உள்ள சிவசேனா மருத்துவ அமைச்சர் (மேலே பட்டியலில் உள்ள சிவசேனா மருத்துவ அமைச்சர்)</p>	<p>மாண்புமிகு சிவசேனா மருத்துவ அமைச்சர்</p>	<p>1985 சனவரி 01 முதல் 30 ஆகிய காலகட்டத்தில் சிவசேனா மருத்துவ அமைச்சர் (மாண்புமிகு சிவசேனா மருத்துவ அமைச்சர்) (மேலே பட்டியலில் உள்ள சிவசேனா மருத்துவ அமைச்சர்)</p>	<p>ஒருக்கொரு பட்டியலில் உள்ள சிவசேனா மருத்துவ அமைச்சர் (மேலே பட்டியலில் உள்ள சிவசேனா மருத்துவ அமைச்சர்)</p>	<p>(மேலே பட்டியலில் உள்ள சிவசேனா மருத்துவ அமைச்சர்)</p>	<p>ஒருக்கொரு பட்டியலில் உள்ள சிவசேனா மருத்துவ அமைச்சர் (மேலே பட்டியலில் உள்ள சிவசேனா மருத்துவ அமைச்சர்)</p>	<p>மேலே பட்டியலில் உள்ள சிவசேனா மருத்துவ அமைச்சர் (மேலே பட்டியலில் உள்ள சிவசேனா மருத்துவ அமைச்சர்)</p>
	1.							
	2.							
	3.							
	1.							
	2.							
	3.							
	1.							
	2.							
	3.							
	1.							
	2.							
	3.							
	1.							
	2.							
	3.							
	1.							
	2.							
	3.							
	1.							
	2.							
	3.							

### Location map of the sales counter of the Department of Census & Statistics



**PUBLICATIONS OF THE  
DEPARTMENT OF CENSUS AND STATISTICS  
AVAILABLE FOR SALES**

**AT  
THE SAMPLE SURVEY DIVISION,  
DEPARTMENT OF CENSUS AND STATISTICS,  
16/7, ALBERT CRESCENT, COLOMBO 07.  
Telephone 695962 - Ext. 17.**

Name of Publication	** GENERAL PURPOSE PUBLICATION *	Year	Price
1. Statistical Pocket Book in English		1988	46.00
2. Statistical Pocket Book in English		1990	39.00
3. Statistical Pocket Book in English		1994	50.00
4. Statistical Pocket Book in English		1995	50.00
5. Statistical Pocket Book in English		1997	52.50
6. Statistical Pocket Book in English		1998	53.00
7. Statistical Pocket Book in Sinhala and Tamil		1987	46.00
8. Statistical Pocket Book in Sinhala and Tamil		1988	79.00
9. Statistical Pocket Book in Sinhala and Tamil		1990	161.00
10. Statistical Pocket Book in Sinhala and Tamil		1991	175.00
11. Statistical Pocket Book in Sinhala and Tamil		1993	189.00
12. Statistical Pocket Book in Sinhala and Tamil		1994	119.00
13. Statistical Abstract in English		1989	203.00
14. Statistical Abstract in English		1992	285.00
15. Statistical Abstract in English		1993	300.00
16. Statistical Abstract in English		1996	248.00
17. Statistical Abstract in English		1997	210.00
18. Administration Report of Director General Census & Statistics		1995	50.00
19. Administration Report of Director General Census & Statistics		1996	50.00
20. Administration Report of Director General Census & Statistics		1997	53.00
<b>Population and Demography</b>			
1. Census of Population and Housing - (Physically disabled person)		1981	20.00
2. Census of Population and Housing - District Report (each)		1981	50.00
3. Sri Lanka Demographic and Health Survey		1993	310.00
4. Demographic Survey 1994 Sri Lanka (Report on Demographic Characteristics of the Population) Release 3		1994	124.00
5. Demographic Survey 1994 Sri Lanka (Report on Demographic and Housing Characteristics) Release 4		1994	110.00
6. Grama Niladhari Divisions of Sri Lanka		1996	295.00
<b>Agriculture</b>			
1. Estimation of Sown Area under Paddy Cultivation (Alternative to complete enumeration)			19.50
2. Food Balance Sheet (Revised Series)		1991/95	33.00
3. Food Balance Sheet (Revised Series)		1992/96	35.00
4. Food Balance Sheet (Revised Series)		1992/97	39.00
5. Paddy Statistics (Seasonal Report) each			20.00
6. Rubber Cultivation in Sri Lanka		1993	40.00
7. States and Role of Cinnamon Cultivation in Sri Lanka		1993	70.00
8. Cardamon "The Queen of spices" and Distribution in Sri Lanka		1993	68.00
9. Rambutan Cultivation in Sri Lanka		1993	43.00
10. Sowing and Harvesting periods of Paddy Cultivation in Sri Lanka		1994	80.00
11. Agricultural Statistics of Sri Lanka		1995	97.00
12. Paddy Statistics of Sri Lanka		1952/96	
a) With diskette			241.00
b) Without diskette			191.00



**13. Agricultural crops and Livestock survey (Preliminary Reports)**

1.	Badulla	1992/93	80.00
2.	Colombo	1992/93	56.50
3.	Galle	1992/93	70.00
4.	Hambantota	1992/93	75.00
5.	Kalutara	1992/93	78.00
6.	Kegalle	1992/93	56.00
7.	Kurunegala	1992/93	160.00
8.	Matara	1992/93	61.00
9.	Moneragala	1992/93	53.00
10.	Ratnapura	1992/93	85.00
11.	Mahaweli System 'H'	1993/94	40.00
12.	Puttalam	1993/94	71.00
13.	Polonnaruwa	1993/94	44.00
14.	Anuradhapura	1993/94	90.50

**Trade and Industry**

1.	Annual Survey of Industries	1991	30.00
2.	Annual Survey of Industries	1992/93/94 (each)	37.00
3.	Annual Survey of Industries	1995/96/97 (each)	39.00
4.	Annual survey of Industries (Interim Report)	1996	28.00
5.	Annual survey of construction Industries	1993/94	64.00

**National Accounts**

1.	National Accounts of Sri Lanka	1993	102.00
2.	National Accounts of Sri Lanka	1994	111.00
3.	National Accounts of Sri Lanka (Sinhala)	1994	123.00
4.	National Accounts of Sri Lanka (Sinhala)	1995	143.00
5.	National Accounts of Sri Lanka	1996	150.00
6.	National Accounts of Sri Lanka	1997	165.00

**Prices and Wages**

1.	Bulletin of Selected Retail Prices	1975/90	62.50
2.	Bulletin of Selected Retail Prices	1975/91	60.00
3.	Bulletin of Selected Retail Prices	1975/92	77.00
4.	Bulletin of Selected Retail Prices	1995	127.00
5.	Bulletin of Selected Retail Prices	1996	124.00
6.	Weekly Retail Prices - (Colombo City)		
	i. Bulletin No. II	1991/92	30.00
	ii. Bulletin No. III	1992/93	25.00
	iii. Bulletin No. IV	1993/94	43.50
	iv. Bulletin No. V	1995	38.00
	v. Bulletin No. VI	1996	43.00

**Survey Report**

1.	Quarterly Report of the Sri Lanka Labour Force Survey		
	i. Quarterly Report each	1993	40.00
	ii. Quarterly Report each	1994	45.00
	iii. 1st Quarter	1995	55.00
	iv. 2nd Quarter	1995	65.00
	v. 3rd and 4th Quarter each	1995	64.00
	vi. Quarterly Report (each)	1996	64.00
	vii. Quarterly Report (each)	1997	69.00
	viii. 1st Quarter	1998	70.00
2.	Sri Lanka Labour Force Survey (Sinhala)	1992	50.00
3.	Provincial Profile of Labour Force Sri Lanka	1993	122.00
4.	Provincial Profile of Labour Force Sri Lanka	1996	73.00

**Other Reports**

1.	Women and Men in Sri Lanka (Tamil)		133.00
2.	Changing Role of Women in Sri Lanka (English)		200.00
3.	Statistical Data Sheets 1996 (Sinhala, Tamil, English) (each)		5.00
4.	Listing of Non-agricultural Economic Activities (Rural Sector)	1995	29.00





ISBN 955 - 577 - 251 - 7

Printed by Department of Census & Statistics